



Summer
Newsletter

End of Summer Meet & Greet

Monday, August 26th

CASSIS



Join us at 5:00pm for fun, food & friendship.

#First **FRIDAYSTPETE**



**St. Petersburg Alumnae
Panhellenic Association**

www.stpetepanhellenic.com

Volunteer for a shift, have fun and pour beer.

When: Friday September 6th

Where: Downtown St Petersburg

Why: Fun Raising for Scholarships



In 2018 we raised over \$600.00 from this event.

Volunteer Contacts: Pat Lins 727- 452-7653 pat.lins@yahoo.com and

Kim Blessinger 727-698-0510 kim.blessinger@gmail.com

Keep In Touch

Facebook: St Petersburg Alumnae Panhellenic

Instagram: st_pete_alumnae_panhellenic

Website www.stpetepanhellenic.com



Save the Date 6pm December 4th

Holiday Ornament/Gift Exchange!

Bring a wrapped holiday gift Exchange (\$10 value)
for the exchange and be part of the fun!

Middle Grounds Grille, 10925 Gulf Blvd. Treasure Island



SAVE
the
DATE

Meet & Greet
Cassis
5pm Monday
August 26th



**Pour Beer &
Have Fun**
Friday September 6th
Fun Raising for
Scholarships



6pm December 4th
Holiday Gift Exchange
Middle Grounds Grille



Look for upcoming
fun events

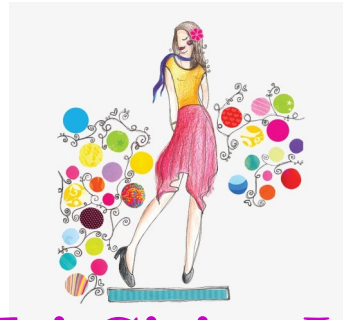


**Scholarship Fashion Show Fundraiser
and Woman of the Year Brunch**

10:00am Social | 10:30 am Brunch

Saturday January 11th

Isla Del Sol Country Club 6000 Sun Blvd



Annual Tri Cities Luncheon

Saturday, February 22

You are cordially invited to join us for
an eventful day of Sisterhood.

11:30am to 1:00pm

Board of Directors

President	Lisa Brown	727-410-4573	lglonek@tampabay.rr.com;
Vice President	Donna Cothron	727-455-9576	donnakothon@gmail.com
Secretary	Kim Blessinger	727-698-0510	kim.blessinger@gmail.com;
Treasurer	Pat Lins	727- 452-7653	pat.lins@yahoo.com;
Advisor	Carol O'Bryon Rogich	727-864-4124	obdesign@tampabay.rr.com;

Congratulations



This year we awarded **three** \$1,500 scholarships. Scholarship Committee, Saranan, Barbara and Sally.

Scholarship recipients; Christie Post Kappa Kappa Gamma, Alaina Butler Kappa Alpha Theta

Not Pictured Taylor Perko Kappa Alpha Theta



Kim Blessinger
Alpha Sigma Alpha 18-19
4286 41st St. N
St. Petersburg Florida 33714

Please detach this portion and return with your check now to: Pat Lins, 4549 14th Way NE, St. Petersburg, FL 33703. Make check payable to St. Petersburg Alumnae Panhellenic Association.

Name: _____

Phone #: _____

Email: _____

Mailing Address: _____

Sorority / School: _____

Dues & Donation - Total Enclosed \$ _____

DONATIONS SCHOLARSHIP FUND

DONATION LEVELS:

Spirit Donor \$5 - \$49

Sunflower Donor: \$50-\$99

Star Donor: \$100+

Your individual donations combined with the proceeds raised from the years events allowed SPAPA to award **three \$1,500 scholarships!**

The individual donors are recognized on the luncheon program by gift level and by sorority. We also accept business or organization level donations. See if your sorority can contribute today! Thanks!

Donations to the Scholarship Fund has been making a difference in young women's collegiate careers since 1928.

This year as you fill out your membership dues check we hope you will include a little or a lot extra toward the scholarship fund!

Individual donations are extremely important to continue to fund the scholarship program at the same level.

Awarding the scholarships to our next generation of Panhellenic women is such a wonderful close to our busy year.

It is amazing to hear the things they hope to accomplish. We also like to recognize the success our current members and their achievements in their professions, in their families and in the St. Petersburg community.